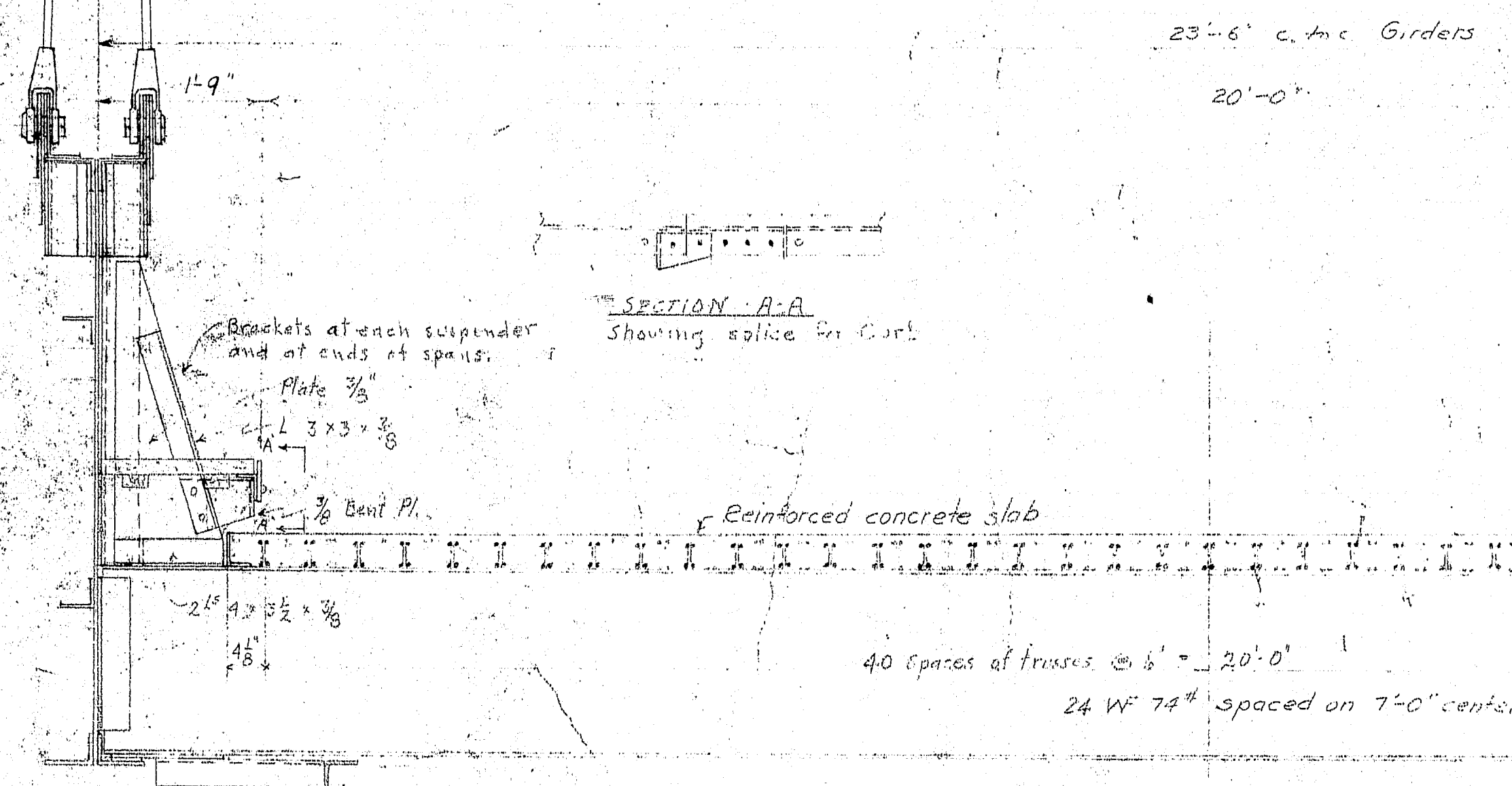


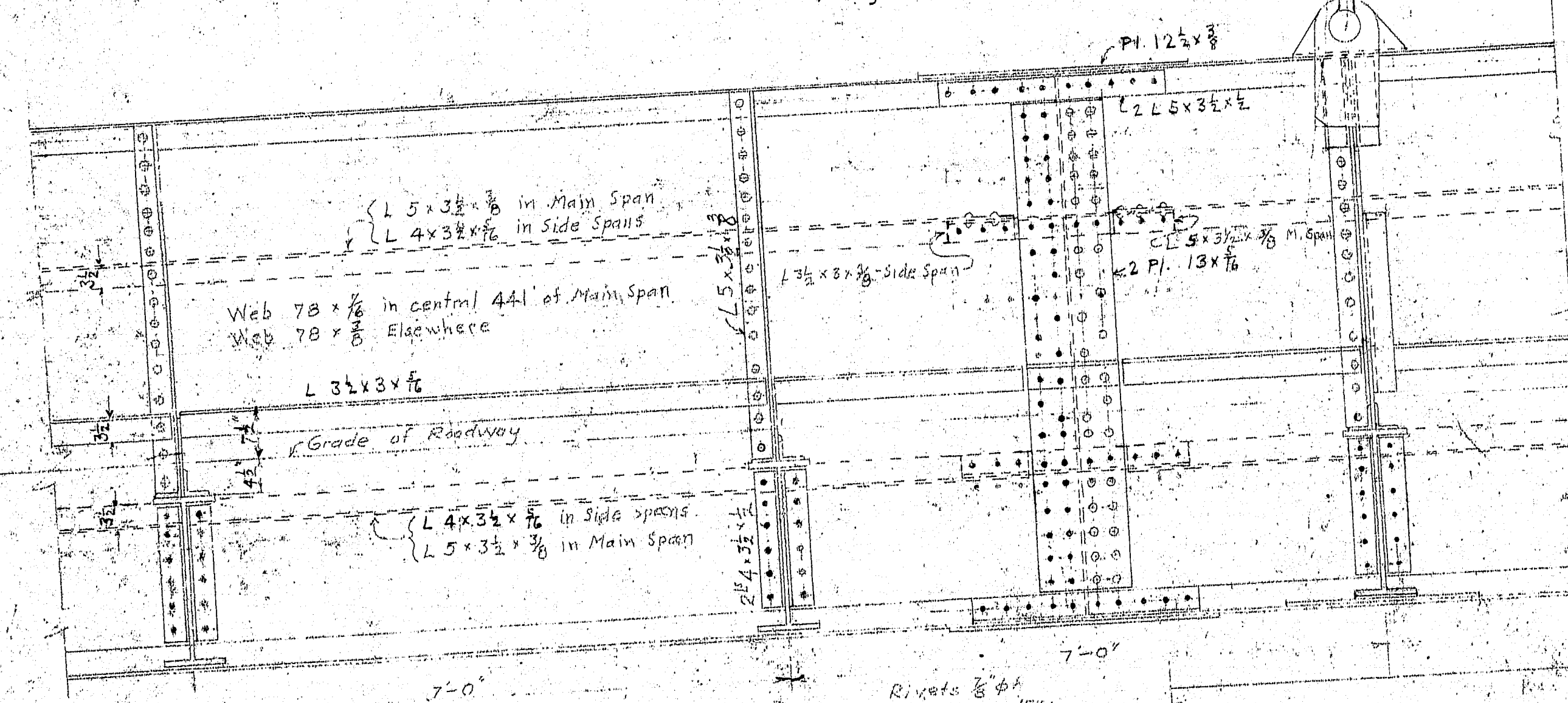
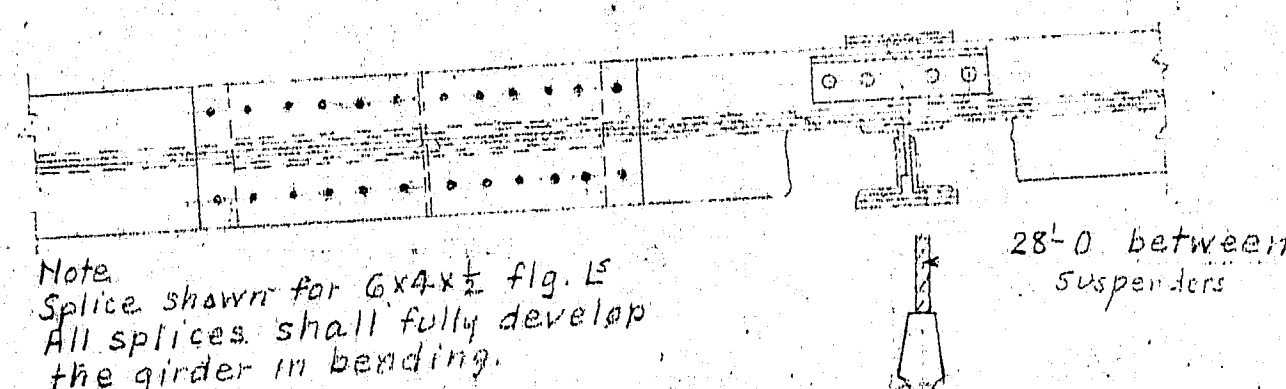
DETAILS OF SIDEWALK
Scale 1" = 1'-0"



HALF SECTION AT GIRDER CONNECTION

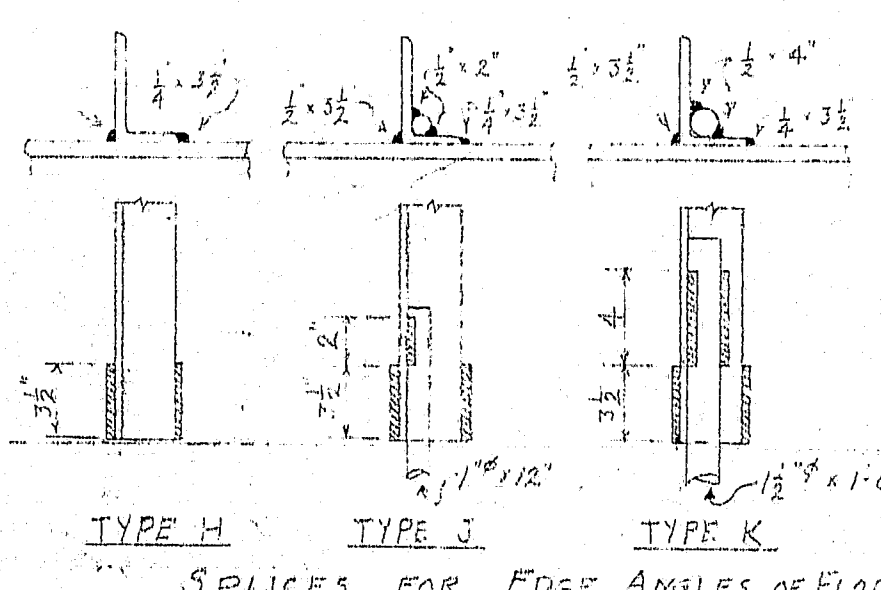
HALF SECTION AT FLOORBEAM BETWEEN SUSPENDERS

Scale 3/4" = 1'-0"

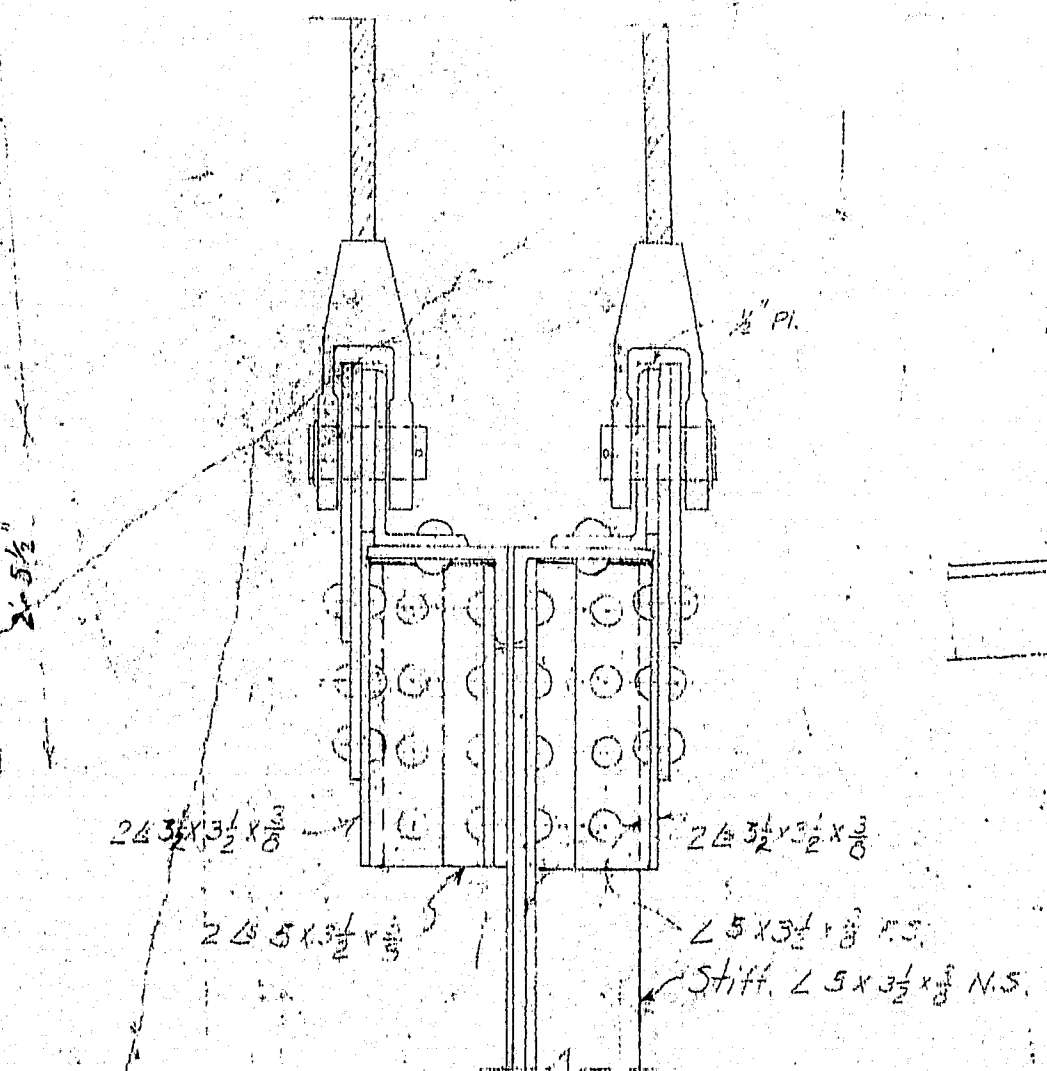


TYPICAL GIRDER ELEVATION

Scale 3/4" = 1'-0"

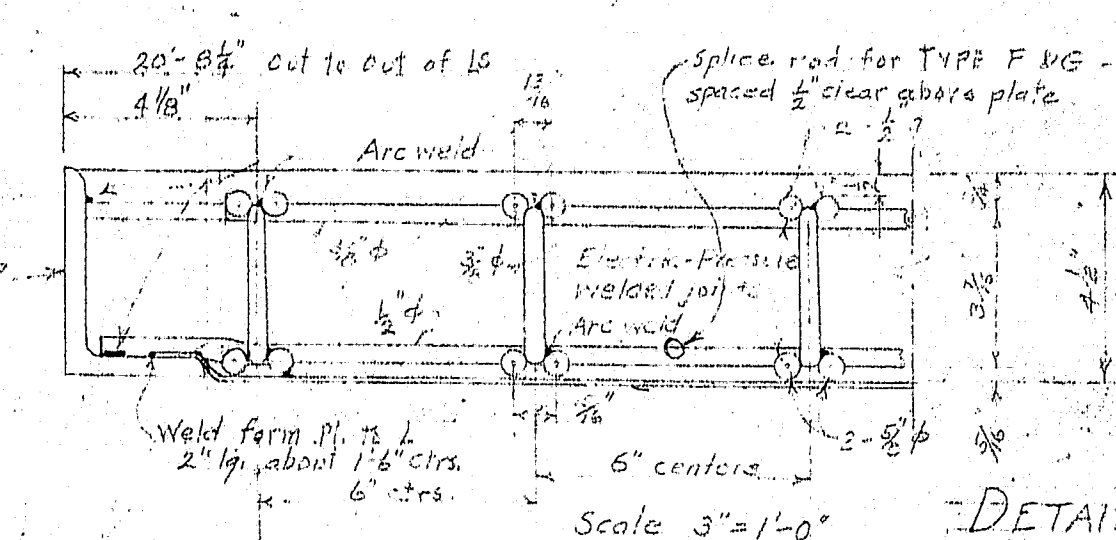
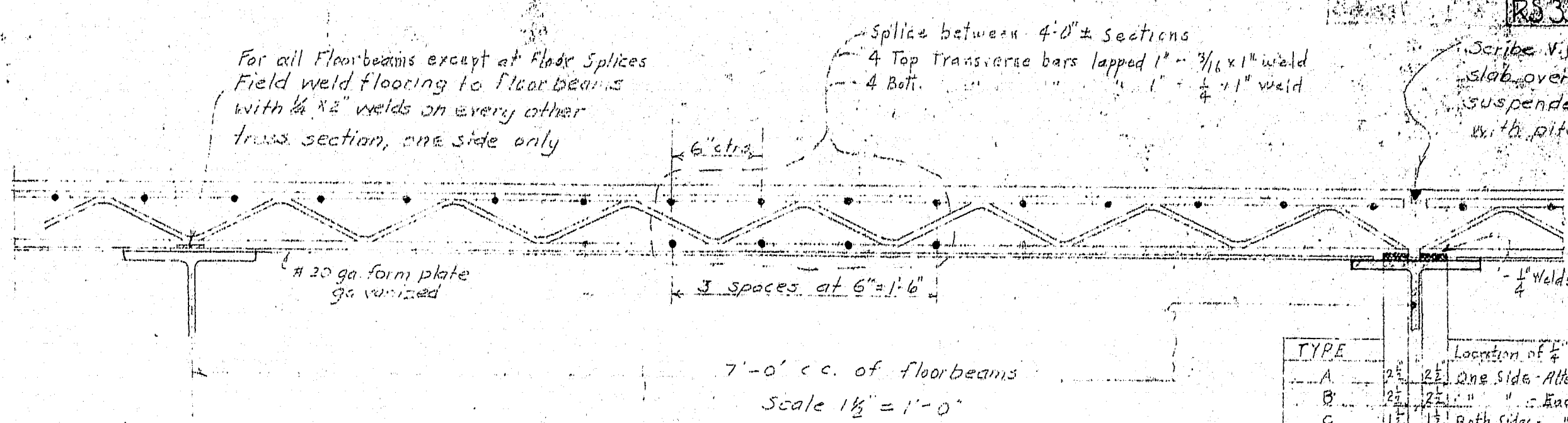


Edge Angle Splice

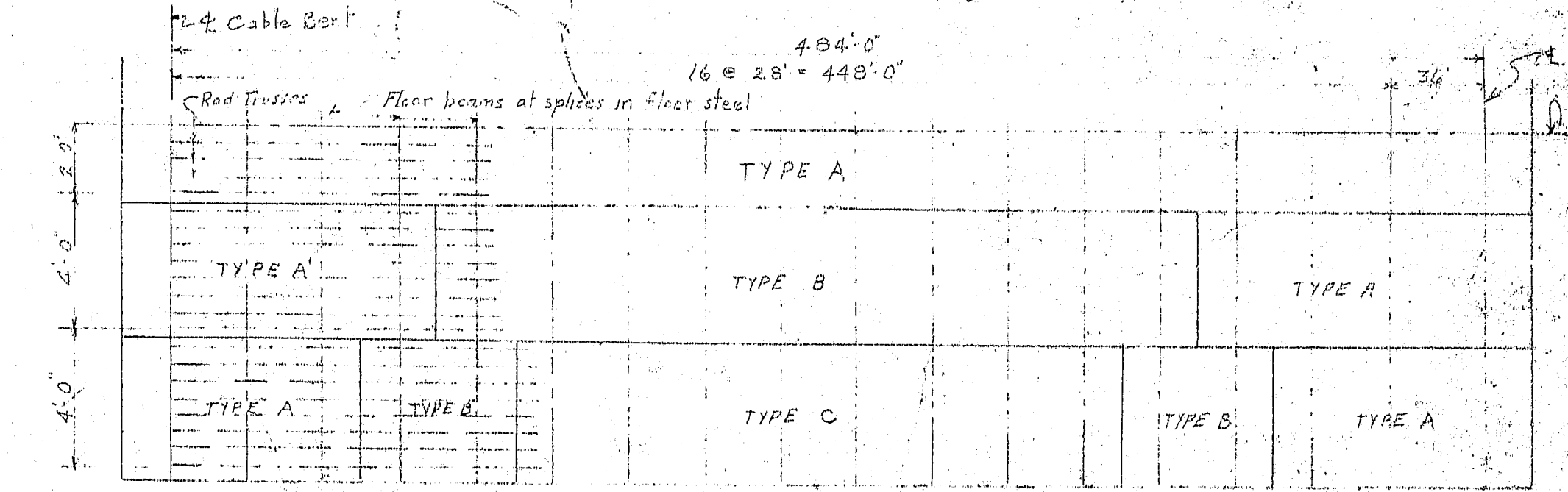


TYPICAL DETAIL OF GIRDER CONNECTION

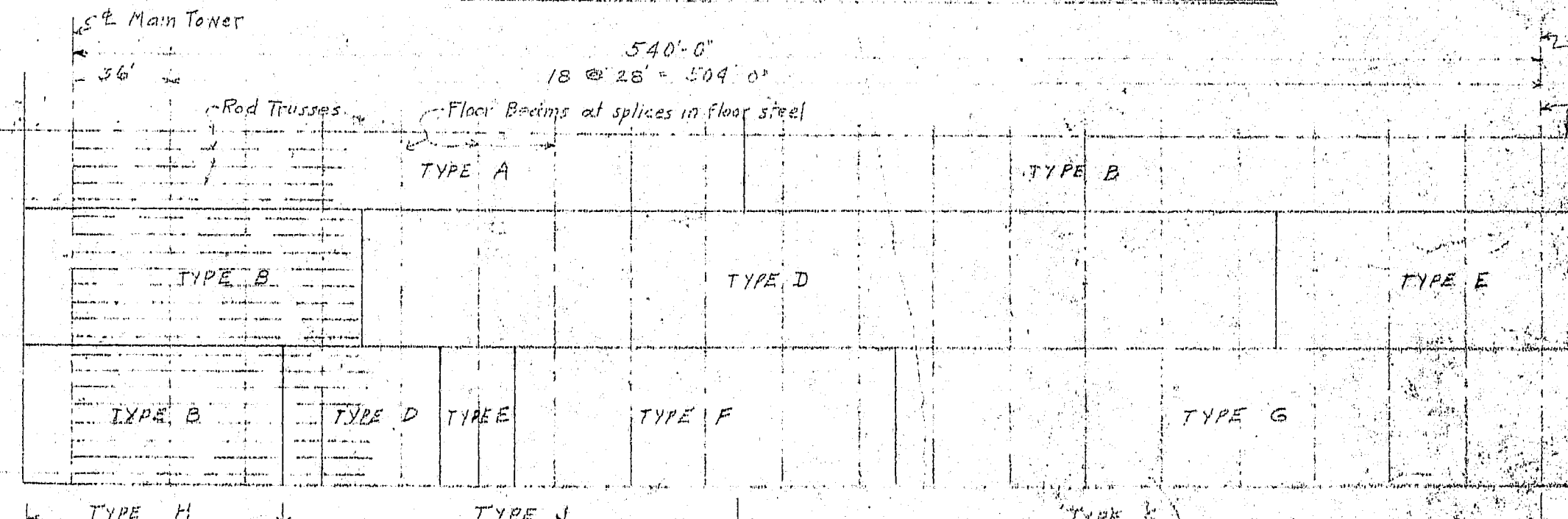
Scale 1/2" = 1'-0"



DETAILS OF ROADWAY DECK SLAB



LOCATION AND TYPES OF FLOOR SPICES FOR SIDE SPANS



LOCATION AND TYPES OF FLOOR SPICES FOR MAIN SPAN

General Notes:

- Floor designed for H15 loading (ASHO Specs 1935).
- Concrete 3000 lb. at 28 days n=10 f_c 1200 f_t 18,000.
- Girders designed for uniform live load of 85 lb. per sq. ft. and on H15 truck concentration between suspenders. Steel for the webs and angles and flange plates at stiff ends and their splices shall conform to A36 except min. yield of 36,000 and ultimate 62-72,000.
- Reinforcing shown for deck is the type manufactured by the Reliance Steel Products Co., Rankin, Pa. A deck of equivalent strength may be substituted but the weight is not to exceed 61.5 lb.

REVISIONS	
1-7-38	Shift girder web, stiffener angles, suspender connection, floor beam Bth at suspenders and web splice.
3-21-38	Added note that flg. stiffener angles Revised length of 7/8 web flange with details
7-23-37	Revised as built
Estimated Quantities	
Structural Steel in Girders	Contract Qty. as built
Added Detail System	1,774,600 lbs. (Nov 1937)
Roadway deck	42,114 sq. ft.
Timber Sidewalk	6,827 sq. ft.

SUPERSTRUCTURE

PWA PROJECT NO. ME 1010

DEER ISLE, SEDGWICK BRIDGE DISTRICT

BRIDGE OVER EGGEMOGGIN REACH FROM LITTLE DEER ISLE TO SEDGWICK HANCOCK COUNTY MAINE

SUSPENSION BRIDGE CROSS SECTION AND STIFFENING GIRDERS

ROBINSON AND STEINMAN ENGINEERS NEW YORK CITY

SCALE AS NOTED DRAWING NUMBER RS 330-1-102 SEPTEMBER 1937

